

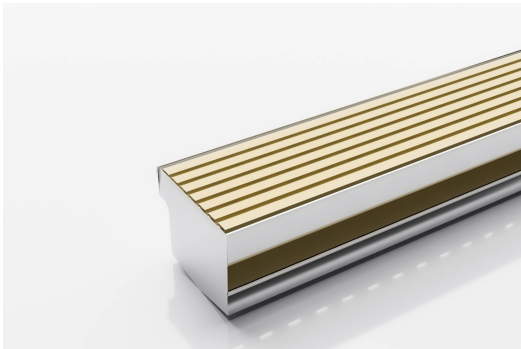


ARCHITECTURAL  
GRATES + DRAINS



# 65AATDi-BG

## Threshold with Sub-Sill



The iconic Wave Grate, now available for level entry threshold drainage in a new slim 65 x 25mm profile and sun kissed Beach Gold finish

For sliding and hinged doors with sill and sub sill. Featuring a low carbon anodized aluminium grate in Beach Gold finish with concealed 316 stainless steel channel section connecting sill and sub-sill for door tracks and thresholds. Allows door sills to be drained while having internal and external floor surfaces with no step down. Please be aware that depending on the installation environment, for a pool installation or close to a surf beach, you may need to have your stainless steel channel electropolished.

**Code** 65AATDi-BG

**Range** Threshold

**Grate Style** AA

**Category** Made-to-Length

**Channel Material** Stainless Steel

**Steel Grade** 316

### SPECIFICATIONS + DIMENSIONS

<b>Channel Width</b>	75mm
<b>Channel Depth</b>	Adjustable
<b>Length(s)</b>	As Required
<b>Outlet Size</b>	DN40, DN50

### STORMTECH COLOUR FINISHES



Beach Gold

Electroplate finishes subject to natural variation with time and local environment. Factors such as pools/surf beaches may require electropolishing. Contact us for suitability.



Grates longer than 1500mm supplied in sections. Tile Inserts longer than 1200mm supplied in sections. Channels over 3000mm supplied in sections with joiner. +/-2mm tolerance on dimensions.

### PRODUCT APPLICATIONS

Threshold Drainage

Copyright © Stormtech Pty Ltd. Patent 733361. Drawings not to scale, please use dimensions shown. Downloaded 17/04/2026 (please check for updates)



Visit [stormtech.com.au](http://stormtech.com.au)  
for tools + inspiration.

Phone **1300 653 403**

Email [info@stormtech.com.au](mailto:info@stormtech.com.au)