

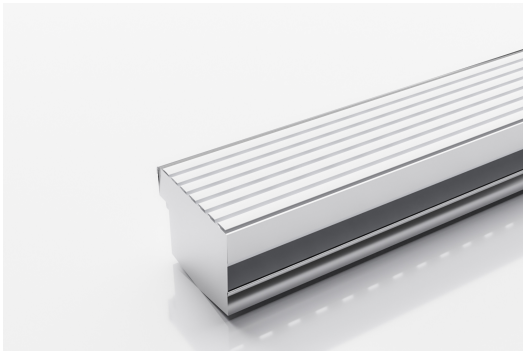


ARCHITECTURAL
GRATES + DRAINS



65AATDi

Threshold with Sub-Sill



The iconic Wave Grate, now available for level entry threshold drainage in a new slim 65 x 25mm profile

For sliding and hinged doors with sill and sub-sill. Featuring a low carbon anodized aluminium grate with concealed 316 stainless steel channel section connecting sill and sub-sill for door tracks and thresholds. Allows door sills to be drained while having internal and external floor surfaces with no step down. Please be aware that depending on the installation environment, for a pool installation or close to a surf beach, you may need to have your stainless steel channel electropolished.

Code 65AATDi

Range Threshold

Grate Style AA

Category Made-to-Length

Channel Material Stainless Steel

Steel Grade 316

SPECIFICATIONS + DIMENSIONS

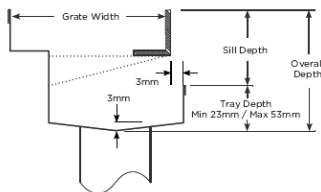
| | |
|----------------------|-------------|
| Channel Width | 75mm |
| Channel Depth | Adjustable |
| Length(s) | As Required |
| Outlet Size | DN40, DN50 |

STORMTECH COLOUR FINISHES



Aluminium

Electroplate finishes subject to natural variation with time and local environment. Factors such as pools/surf beaches may require electropolishing. Contact us for suitability.



Grates longer than 1500mm supplied in sections. Tile Inserts longer than 1200mm supplied in sections. Channels over 3000mm supplied in sections with joiner. +/-2mm tolerance on dimensions.

PRODUCT APPLICATIONS

Threshold Drainage

Copyright © Stormtech Pty Ltd. Patent 733361. Drawings not to scale, please use dimensions shown. Downloaded 18/04/2026 (please check for updates)



Visit stormtech.com.au
for tools + inspiration.

Phone **1300 653 403**

Email info@stormtech.com.au