

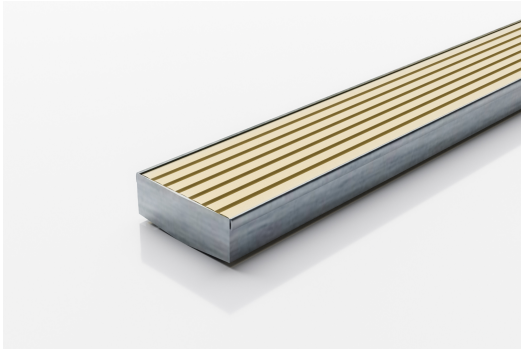


ARCHITECTURAL
GRATES + DRAINS



65AAi25MTL-BG

Linear Drain



The iconic Wave Grate, now available in a new slim 65 x 25mm profile and sun kissed Beach Gold Finish

Linear drainage system featuring low carbon anodized aluminium grate in beach gold finish and 316 marine grade stainless steel channel. Made to specified length with specified outlet position.

Refer to AS3500 for outlet pipe sizes specific to your installation

Code 65AAi25MTL-BG

Range 65

Grate Style AA

Category Made-to-Length

Channel Material Stainless Steel

Steel Grade 316

SPECIFICATIONS + DIMENSIONS

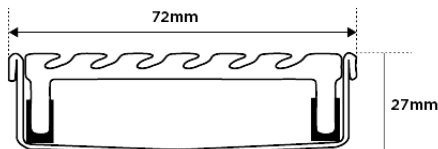
Channel Width	72mm
Channel Depth	27mm
Length(s)	As Required
Outlet Size	DN40, DN50, DN65

STORMTECH COLOUR FINISHES



Beach Gold

Electroplate finishes subject to natural variation with time and local environment. Factors such as pools/surf beaches may require electropolishing. Contact us for suitability.



Grates longer than 1500mm supplied in sections. Tile Inserts longer than 1200mm supplied in sections. Channels over 3000mm supplied in sections with joiner. +/-2mm tolerance on dimensions.

PRODUCT APPLICATIONS

- Bathroom Drainage
- Aged / Health Care Drainage
- Balcony Drainage
- Courtyard / Patio Drainage
- Pool and Spa Area Drainage
- Hospitality Drainage
- Paved Area Drainage
- Shower Drainage
- Multi-Residential Drainage
- Wet Area Drainage

Copyright © Stormtech Pty Ltd. Patent 733361. Drawings not to scale, please use dimensions shown. Downloaded 18/04/2026 (please check for updates)



Visit stormtech.com.au
for tools + inspiration.

Phone **1300 653 403**

Email info@stormtech.com.au