

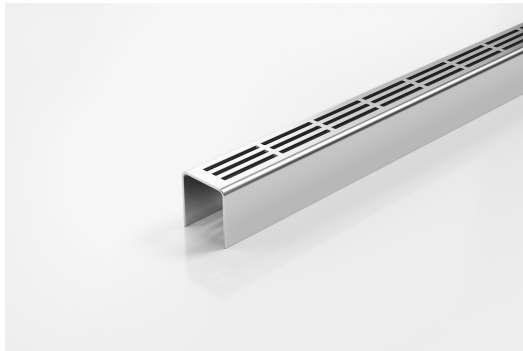


ARCHITECTURAL  
GRATES + DRAINS



# 38PS40

## Linear Drain



This is our Punched Slot grate for use with the 38G90 and 38G100 Special Assembly drain.

A 38mm wide UPVC channel is connected via downpipes at 200mm intervals to sockets in a 90mm or 100mm drain below. This allows the channel to be installed level while the drainpipe is given sufficient fall to be self-cleaning.

Please be aware that depending on the installation environment, for a pool installation or close to a surf beach, you may need to have your stainless steel grates electropolished.

This unique drainage system was recognised for its innovation by a DesignMark at the Australian International Design Awards.

**Code** 38PS40

**Range** Special Assembly

**Grate Style** PS

**Category** Components

**Channel Material** Stainless Steel

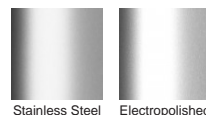
**Steel Grade** 316

Grates longer than 1500mm supplied in sections. Tile Inserts longer than 1200mm supplied in sections. Channels over 3000mm supplied in sections with joiner. +/-2mm tolerance on dimensions.

### SPECIFICATIONS + DIMENSIONS

<b>Channel Width</b>	38mm
<b>Channel Depth</b>	40mm
<b>Length(s)</b>	900mm 1000mm 1200mm 1500mm
<b>Outlet Size</b>	N/A

### STORMTECH COLOUR FINISHES



Electroplate finishes subject to natural variation with time and local environment. Factors such as pools/surf beaches may require electropolishing. Contact us for suitability.

### PRODUCT APPLICATIONS

- |                            |                         |
|----------------------------|-------------------------|
| Bathroom Drainage          | Shower Drainage         |
| Balcony Drainage           | Special Needs Drainage  |
| Commercial Drainage        | Threshold Drainage      |
| Courtyard / Patio Drainage | Suspended Slab Drainage |
| Pool and Spa Area Drainage | Wet Area Drainage       |
| Paved Area Drainage        |                         |

Copyright © Stormtech Pty Ltd. Patent 733361. Drawings not to scale, please use dimensions shown. Downloaded 18/04/2026 (please check for updates)



Visit [stormtech.com.au](http://stormtech.com.au)  
for tools + inspiration.

Phone **1300 653 403**

Email [info@stormtech.com.au](mailto:info@stormtech.com.au)