

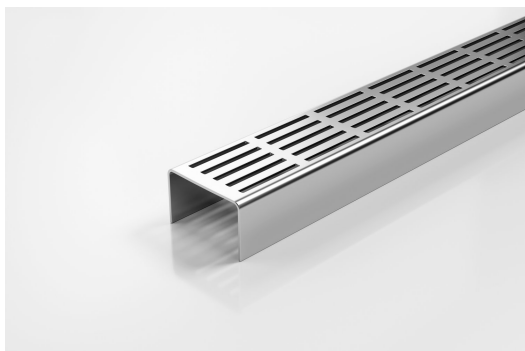


ARCHITECTURAL
GRATES + DRAINS



65PS40

Linear Drain



Code 65PS40

Range Special Assembly

Grate Style PS

Category Components

Channel Material Stainless Steel

Steel Grade 316

Grates longer than 1500mm supplied in sections. Tile Inserts longer than 1200mm supplied in sections. Channels over 3000mm supplied in sections with joiner. +/-2mm tolerance on dimensions.

The 65PS40 is our Punched Slot grate designed to be used with our Special Assembly units 65G100 and 65G90.

A 65mm wide UPVC channel is connected via downpipes at 200mm intervals to sockets in a 100mm drain below. This allows the channel to be installed level while the drainpipe is given sufficient fall to be self-cleaning.

Please be aware that depending on the installation environment, for a pool installation or close to a surf beach, you may need to have your stainless steel grates electropolished.

This unique drainage system was recognised for its innovation by a DesignMark at the Australian International Design Awards.

SPECIFICATIONS + DIMENSIONS

Channel Width	65mm				
Channel Depth	40mm				
Length(s)	900mm	1000mm	1200mm	1500mm	
Outlet Size	N/A				

STORMTECH COLOUR FINISHES



Stainless Steel



Electropolished

Electroplate finishes subject to natural variation with time and local environment. Factors such as pools/surf beaches may require electropolishing. Contact us for suitability.

PRODUCT APPLICATIONS

Balcony Drainage
Courtyard / Patio Drainage
Pool and Spa Area Drainage
Hospitality Drainage
Paved Area Drainage
Special Needs Drainage

Threshold Drainage
Suspended Slab Drainage



Copyright © Stormtech Pty Ltd. Patent 733361. Drawings not to scale, please use dimensions shown.
Downloaded 14/08/2025 (please check for updates)

Visit **stormtech.com.au**
for tools + inspiration.

Phone **1300 653 403**

Email **info@stormtech.com.au**