

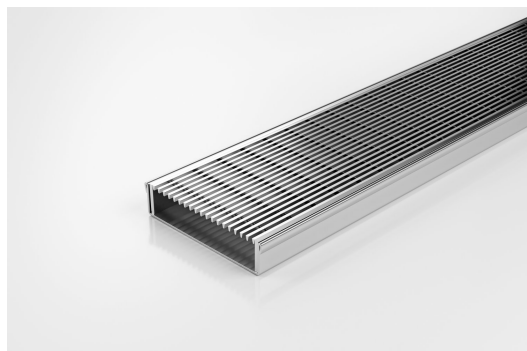


ARCHITECTURAL  
GRATES + DRAINS



# 100ARi20

## Linear Drain



The 100ARi20 is a modular drainage system with a stainless steel grate and stainless steel channel.

The 100AR is our premium style grate featuring a 2mm wire/2.5mm gap. Manufactured from 316 marine grade steel. Lengths over 3000mm available on request.

Stormtech Modular Kits are supplied with grate and oversized channel to be cut down on site. One piece channel comes with pre punched spigot with outlet extender (kits up to 2000mm long). Oversized channel enables choice of outlet positions: centre, end or wherever preferred. Kits over 2000mm long and kits requiring multiple outlets are supplied with outlet on joiner plate. All kits are supplied with 2x clip-on end caps.

**(Grate/Channel Lengths Provided) 900mm/1500mm, 1000mm/1500mm, 1200mm/1800mm, 1500mm/2400mm, 1800mm/3000mm, 2000mm/3000mm**

**Code** 100ARi20

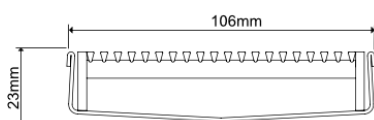
**Range** 100

**Grate Style** AR

**Category** Modular Kits

**Channel Material** Stainless Steel

**Steel Grade** 316

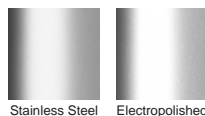


Grates longer than 1500mm supplied in sections. Tile Inserts longer than 1200mm supplied in sections. Channels over 3000mm supplied in sections with joiner. +/-2mm tolerance on dimensions.

### SPECIFICATIONS + DIMENSIONS

<b>Channel Width</b>	106mm
<b>Channel Depth</b>	23mm
<b>Length(s)</b>	900mm 1000mm 1200mm 1500mm 1800mm 1900mm 2000mm
<b>Outlet Size</b>	DN50, DN80, DN100

### STORMTECH COLOUR FINISHES



Electroplate finishes subject to natural variation with time and local environment. Factors such as pools/surf beaches may require electropolishing. Contact us for suitability.

### PRODUCT APPLICATIONS

- |                            |                            |
|----------------------------|----------------------------|
| Bathroom Drainage          | Shower Drainage            |
| Balcony Drainage           | Multi-Residential Drainage |
| Commercial Drainage        | Special Needs Drainage     |
| Courtyard / Patio Drainage | Threshold Drainage         |
| Pool and Spa Area Drainage | Suspended Slab Drainage    |
| Paved Area Drainage        | Wet Area Drainage          |



Copyright © Stormtech Pty Ltd. Patent 733361. Drawings not to scale, please use dimensions shown. Downloaded 17/04/2026 (please check for updates)

Visit [stormtech.com.au](http://stormtech.com.au)  
for tools + inspiration.

Phone **1300 653 403**

Email [info@stormtech.com.au](mailto:info@stormtech.com.au)